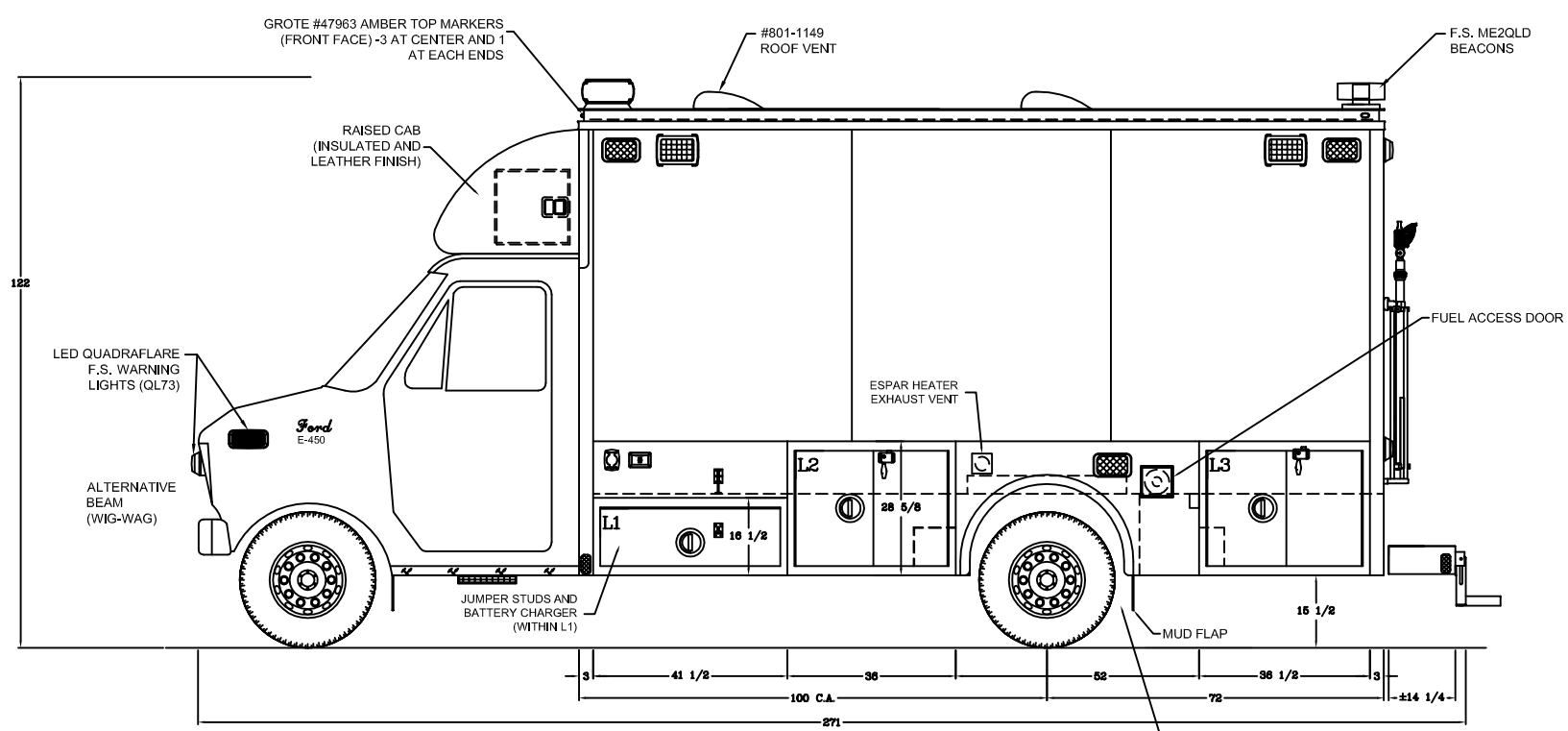


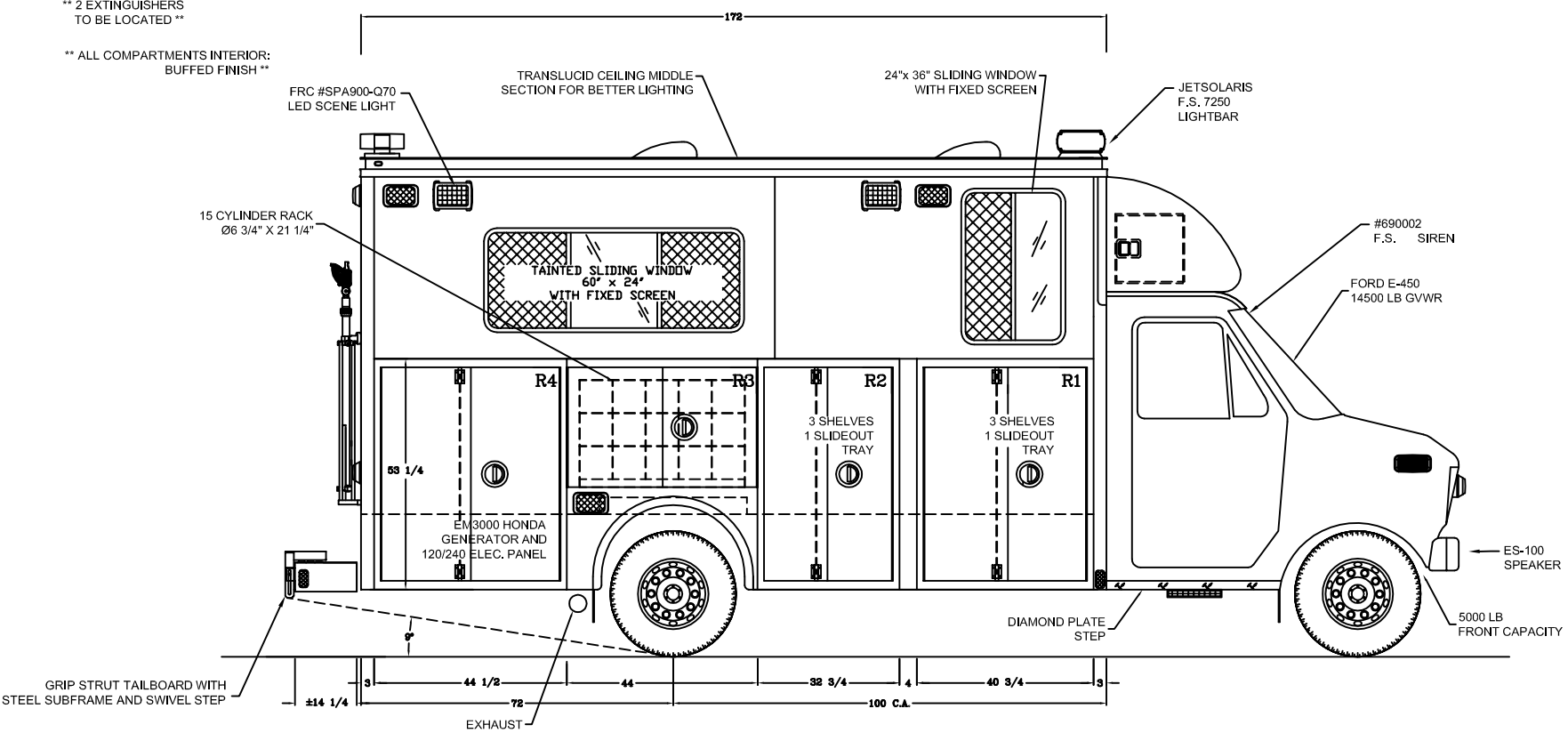
FORD E-450 WALK-IN RESCUE UNIT (OUTSIDE)

CHASSIS:		EMERGENCY EQUIPMENT ACCESSORIES:	MODEL:
-FORD E-450 -14500 LB GVWR (5000 FRONT - 9600 REAR) -FORD GASOLINE ENGINE		-LIGHTBAR -SIREN -100W. SPEAKER -REAR BEACONS (2) -WARNING LIGHTS (10) -WARNING LIGHTS (4) -PERIMETER LIGHTS (4) -SCENE LIGHTS (6) -WIG-WAG -TRAFFIC LIGHTS -LED LIGHTING (WITHIN COMP.) -ROOF VENT -BATTERY CHARGER -WHEEL CHOCKS	-F.S. JLX7250-NFPA -F.S. 690002 -F.S. ES100 -F.S. ME2QLD -F.S. QL64 -F.S. QL73 -AMDOR AY-9500-012 -FRC SPA900 -WHELEN UHF2150A -GROTE -LUMABAR -F.F. 801-1149 -KUSSMAUL -ZICO SAC-44-E
BODY:			
-14' WALK-IN BODY -INSULATED RAISED ROOF ABOVE CHASSIS -15 CYLINDER RACK -BUFFED FINISH COMPARTMENTS -TRANSLUCID CEILING MIDDLE-SECTION -SWIVEL REAR STEP FOR EASIER ACCESS			
COMPARTMENTS:	DIMENSIONS: (W x H x D)		
L1	41 1/2 x 16 1/2 x 19		
L2	36 x 26 5/8 x 23 1/4		
L3	36 1/2 x 26 5/8 x 23 1/4		
R1	40 3/4 x 53 1/4 x 14/19		
R2	32 3/4 x 53 1/4 x 23 1/4		
R3	44 x 29 5/8 x 26		
R4	44 1/2 x 53 1/4 x 23 1/4		



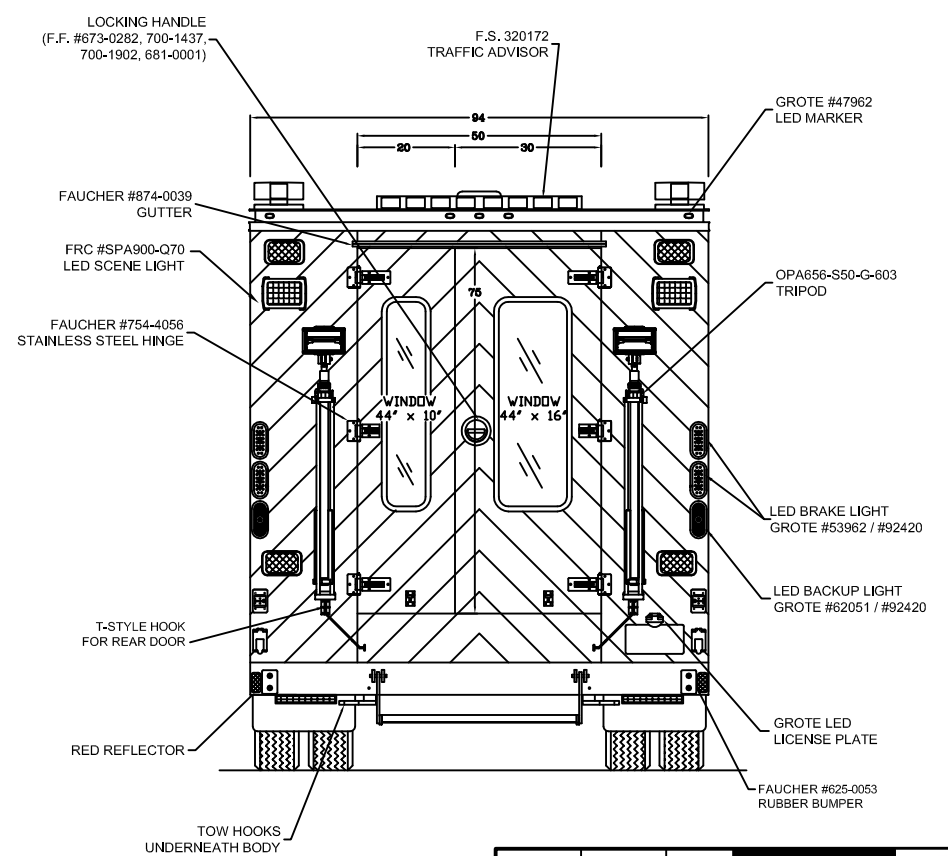
DRIVER SIDE VIEW

- NOTES:**
- ** LUMBAR LIGHTING WITHIN EACH COMPARTMENT **
 - ** WHEEL CHOCKS TO BE LOCATED **
 - ** 2 EXTINGUISHERS TO BE LOCATED **
 - ** ALL COMPARTMENTS INTERIOR: BUFFED FINISH **



OFFICER SIDE VIEW

REAR VIEW

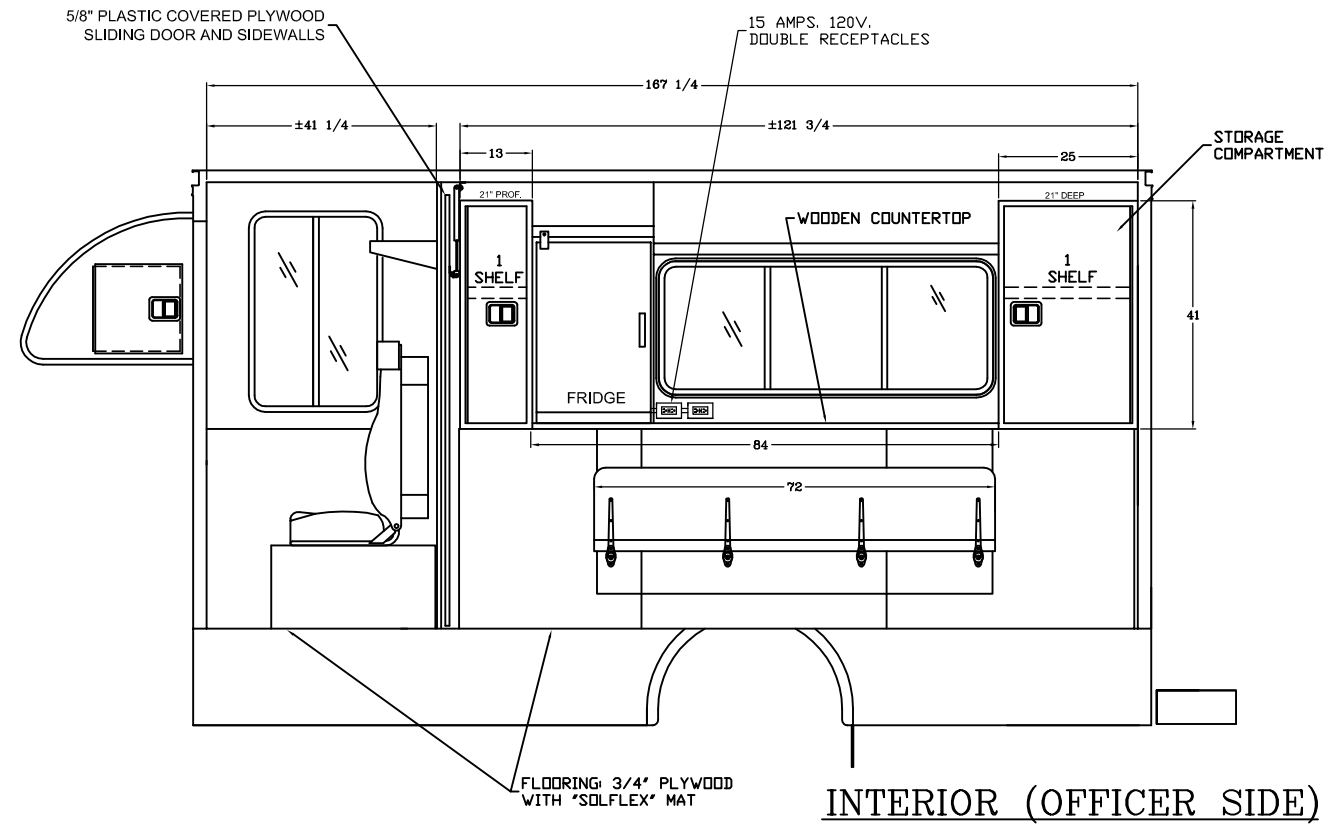


DRAWN BY	D.BOLDUC	DATE	2016-02-16
CHECKED BY			
NOTE DIMENSIONS SHOWN ARE APPROXIMATE AND ARE SUBJECT TO MINOR DEVIATIONS AS MAY OCCUR OR BE NECESSARY IN CONSTRUCTION. MINOR DETAILS NOT SHOWN.		MAXIMETAL Optimized Intervention Vehicles MAXI-METAL INC. 9345, 25th AVENUE SAINT-GEORGES (QUEBEC) G6A 1L1	
PROPERTY AND CONFIDENTIALITY: THE INFORMATION IN THIS DRAWING IS CONFIDENTIAL AND PROPERTY OF MAXI-METAL INC. ANY COPY IS PROHIBITED WITHOUT OUR WRITTEN APPROVAL. ©		CERTIFIED ISO 9001:2008 PHONE NO.: 418 228-8837 1 800 510-6637 FAX NO.: 418 228-0493	
TITLE: FORD E-450 RESCUE UNIT		DRAWING NO.: GENERAL VIEW (OUTSIDE)	
PROJECT: ATE1030		SCALE: 1:1	

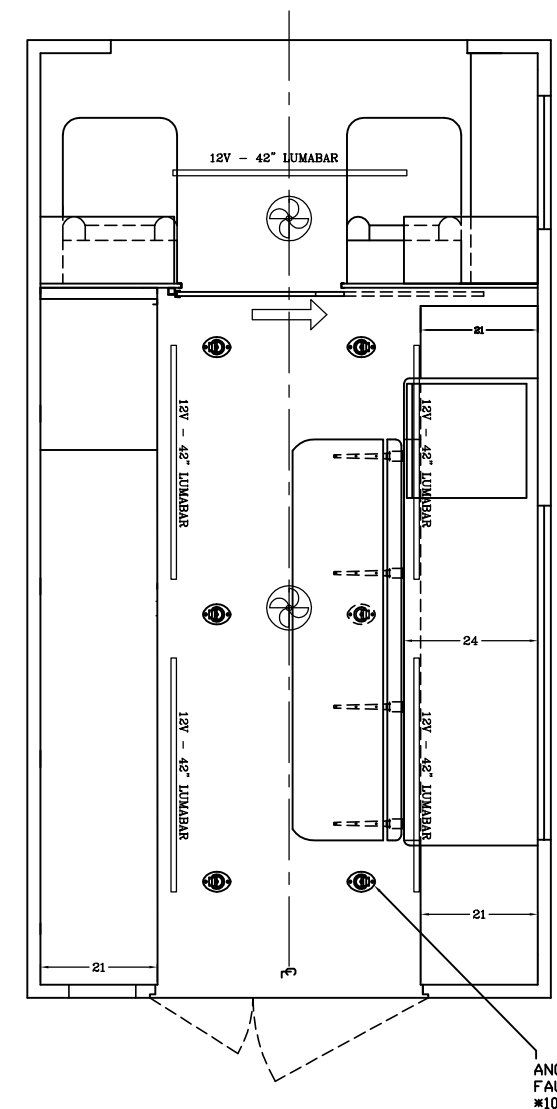
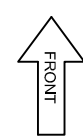
ZONE	REV.	DESCRIPTION	DATE	APPROVED

FORD E-450 WALK-IN RESCUE UNIT (INSIDE)

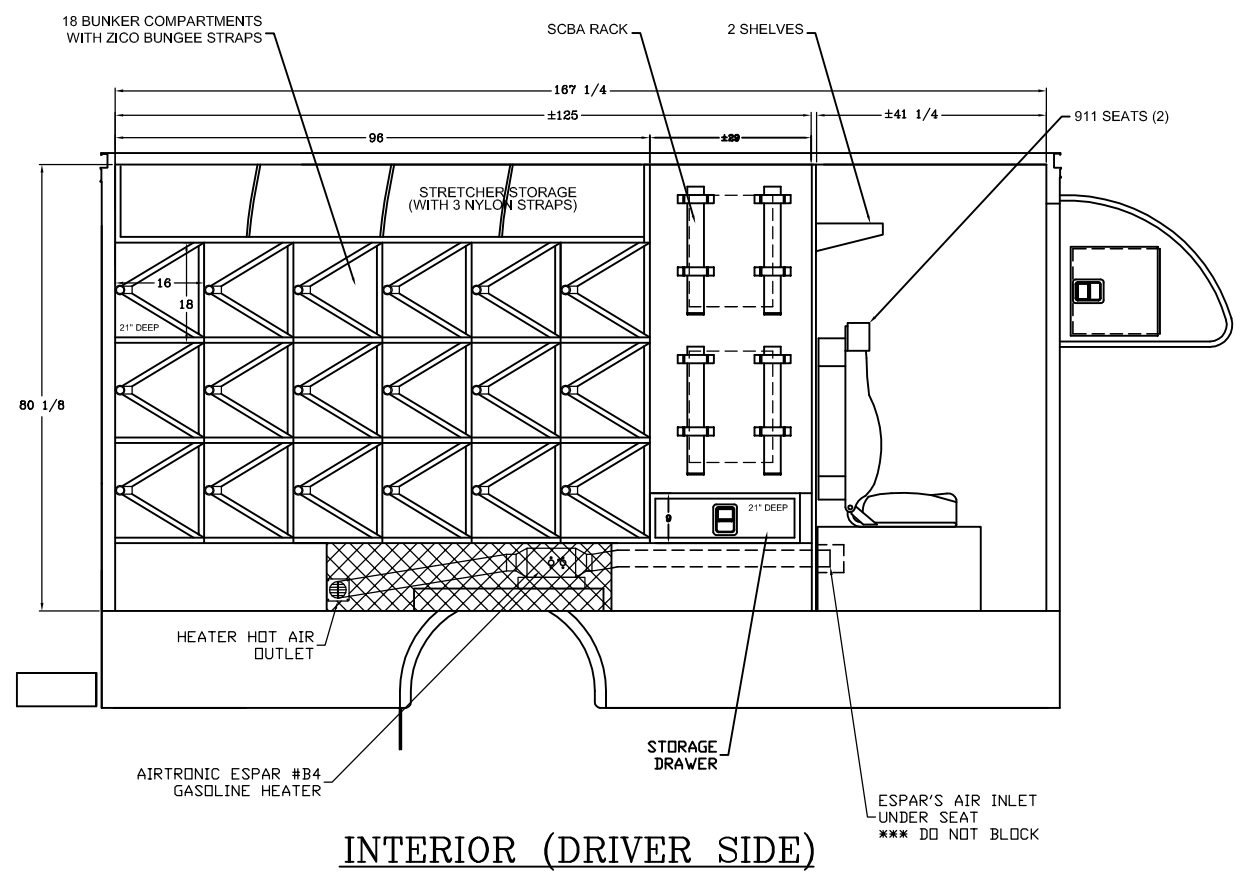
BODY:	EMERGENCY EQUIPMENT	MODEL:
-18 BUNKER COMPARTMENTS	-STRETCHER STORAGE	-LUMABAR 42"
-911 SEATS (2)	-4 SCBA RACK	-ESPAR B4
-2 STORAGE CABINETS	-1 DRAWER	
-MULTIPLE SHELVES AND A WOODEN COUNTER	-FRIDGE	
-FRIDGE	-4 PEOPLE FOLDING BENCH	
-4 PEOPLE FOLDING BENCH	-2 EXTRA CABINET IN RAISED ROOF	
-6 ANCHOR RINGS	-SLIDING DOOR BETWEEN REAR AND FRONT	



INTERIOR (OFFICER SIDE)



INTERIOR (TOP VIEW)



INTERIOR (DRIVER SIDE)

NOTES:

- 1- 1 1/2" (+/- 1/4") SPRAYED URETHANE INSULATION FOR FLOORING, WALLS, CEILING (BOTH REAR DOORS WILL BE INSULATED WITH RIGID WOOLEN PANEL)
- 2- WALLS AND CEILING 3/8" WHITE PLASTIC COVERED PLYWOOD
TRANSLUCID CEILING MIDDLE SECTION FOR BETTER LIGHTING
(REAR DOORS: ALUMINUM FINISH)

ANCHOR RINGS (6)
FAUCHER #783-0057
100 LB CAPACITY

ZONE	REV.	DESCRIPTION	DATE	APPROVED

DRAWN BY	D.BOLDUC	DATE	2016-02-16		
CHECKED BY					
<p>NOTE DIMENSIONS SHOWN ARE APPROXIMATE AND ARE SUBJECT TO MINOR DEVIATIONS AS MAY OCCUR OR BE NECESSARY IN CONSTRUCTION. MINOR DETAILS NOT SHOWN.</p>				<p>MAXI-METAL INC. 9345, 25th AVENUE SAINT-GEORGES (QUEBEC) G6A 1L1</p>	<p>CERTIFIED ISO 9001:2008 PHONE NO.: 418 228-6637 1 800 510-6637 FAX NO.: 418 228-0493</p>
<p>PROPERTY AND CONFIDENTIALITY: THE INFORMATION IN THIS DRAWING IS CONFIDENTIAL AND PROPERTY OF MAXI-METAL INC. ANY COPY IS PROHIBITED WITHOUT OUR WRITTEN APPROVAL ©</p>				<p>TITLE: FORD E-450 RESCUE UNIT</p>	<p>DRAWING NO.: GENERAL VIEW (OUTSIDE)</p>
<p>PROJECT: ATE1030</p>				<p>SCALE: 1/4" = 1'-0"</p>	<p>ANSI</p>