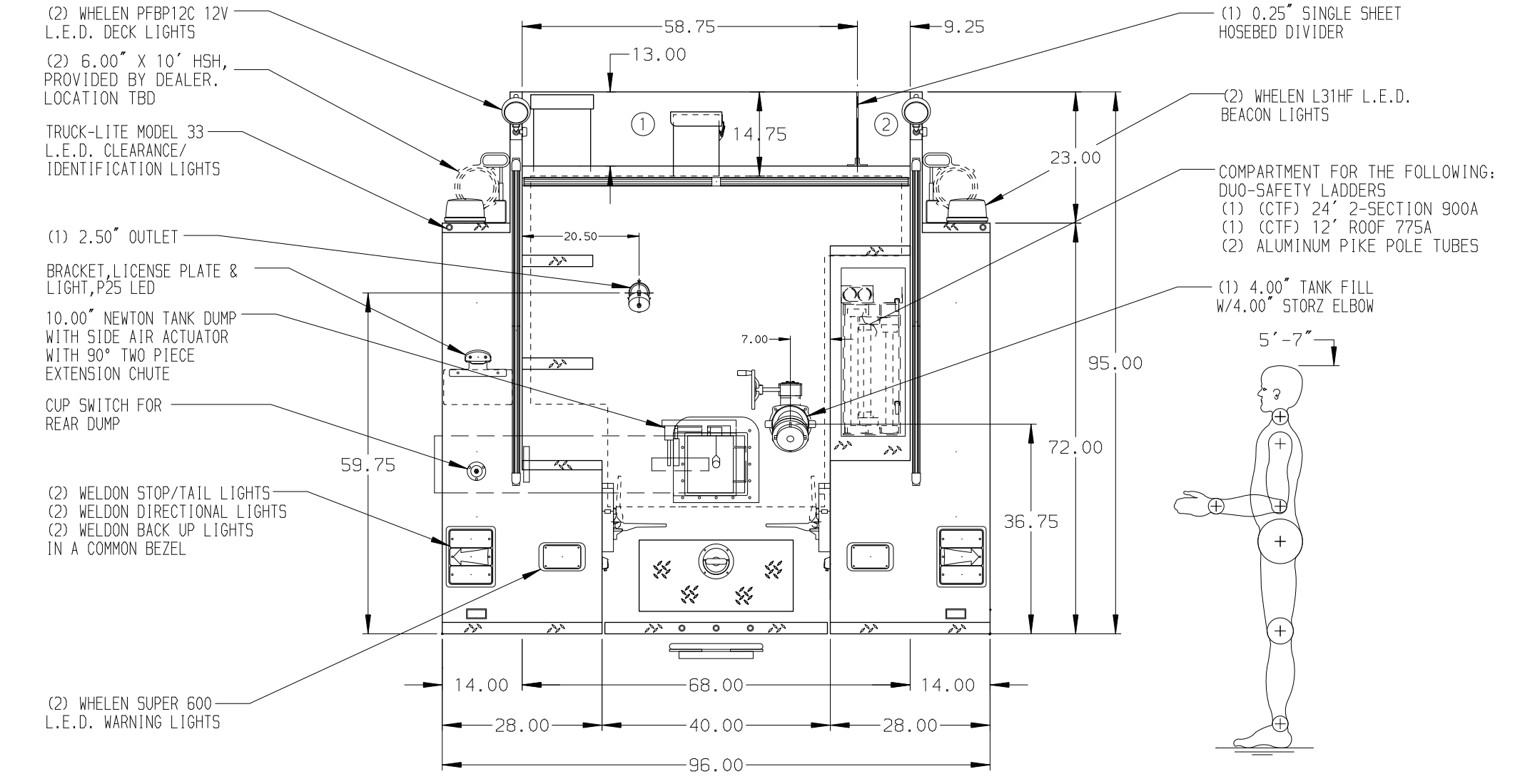
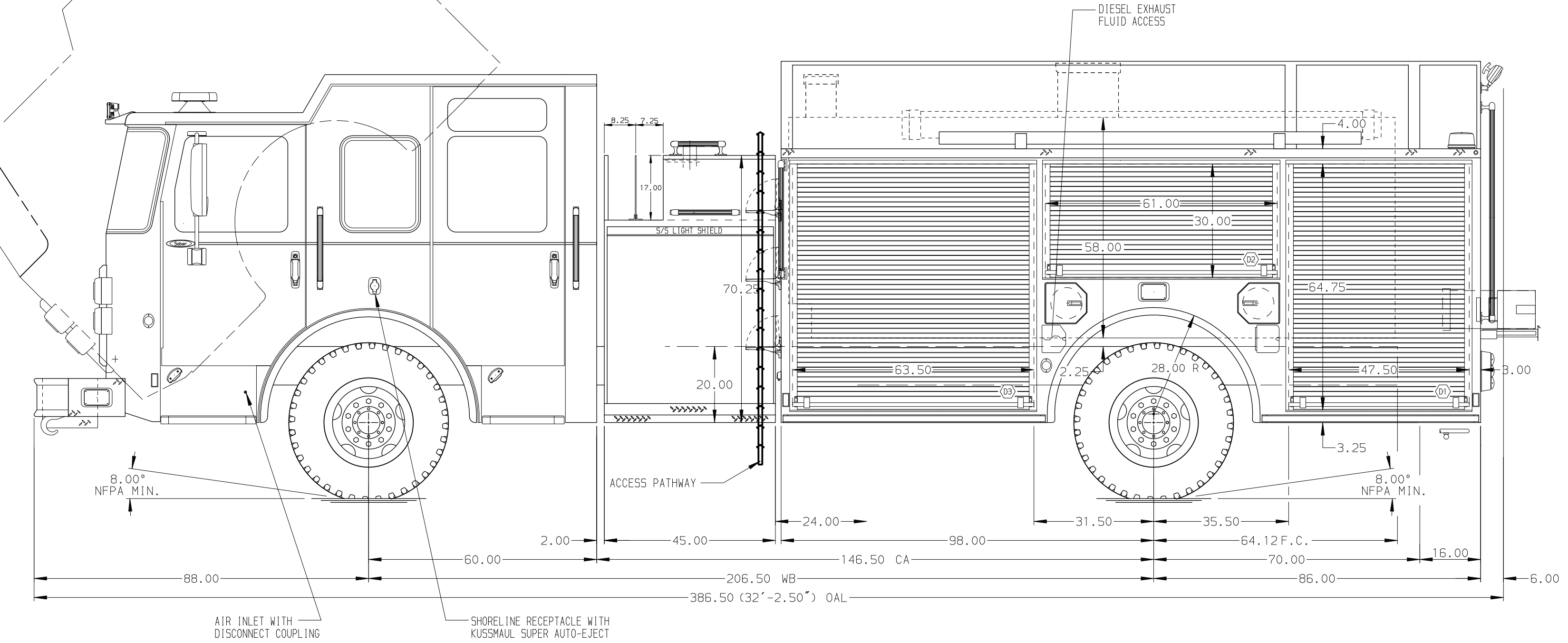


HOSEBED CAPACITIES

(1) 1500' OF 2.50" D.J. POLY HOSE

(2) 400' OF 1.50" D.J. POLY HOSE



ALUMINUM BODY

SIDE ROLL AND FRONTAL IMPACT PROTECTION

NOTE
DIMENSIONS SHOWN ARE APPROXIMATE AND ARE SUBJECT TO MINOR DEVIATIONS AS MAY OCCUR OR BE NECESSARY IN CONSTRUCTION. MINOR DETAILS NOT SHOWN.

REV	DATE	BY	CH	SABER FR

		JOB NO.	30865
		SCALE	1:24
TITLE 1250-D-1780P, 25 GAL FM, 184" BODY, DS&PS FL HGHT, FDLR 45" SIDE CONTROL, (2) CROSSLAYS, A/C		DRAWN BY	JLA
MAKE PIERCE		CHECKED BY	CAG
MODEL DWG NO. 30865AD		SHEET SIZE	D
FOR PIERCE STOCK BRADENTON, FLORIDA		SHEET NO.	1 OF 1